

IMPORTANT INFORMATION

CUSTOMER UPDATE ON AB CONNECTORS, ABCIRP PRODUCT RANGE

AB Connectors introduce NEW improved ABCIRP extraction tool size 16 and 12

Table of contents


1. Commercial / technical statement	Page 1
2. Technical description	Page 2
3. Extraction procedure	Page 3
4. Part numbers	Page 5
5. Customer support	Page 6

1. Commercial & Technical Statement

“As part of the drive for continuous improvement, AB Connectors are pleased to confirm the availability of the new improved design of extraction tool applicable to the ABCIRP Connector range.

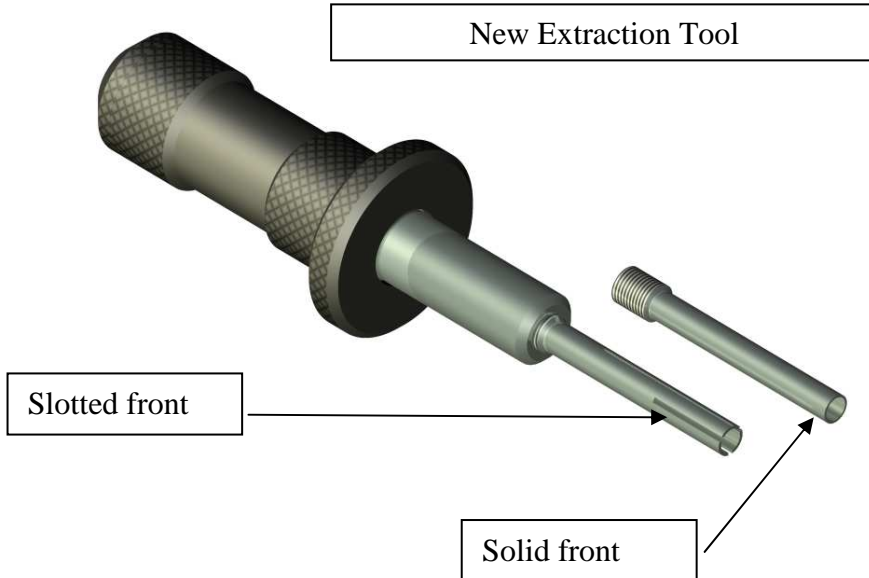
The new design gives enhanced ease of contact extraction, and by virtue of the design, has improved the robustness of the tip.

AB Connectors will from 16th August 2010 supply both styles of extraction tool tips with every order - ”split” and “solid” front tips.”


	Prepared By : Mike Townsend – Technical & Quality Director	Issue : 1	11 th Aug 2010	Page 1 of 6
---	--	-----------	---------------------------	-------------

2. Technical description

The changes made affect to the front form of the extraction of the extraction tool.



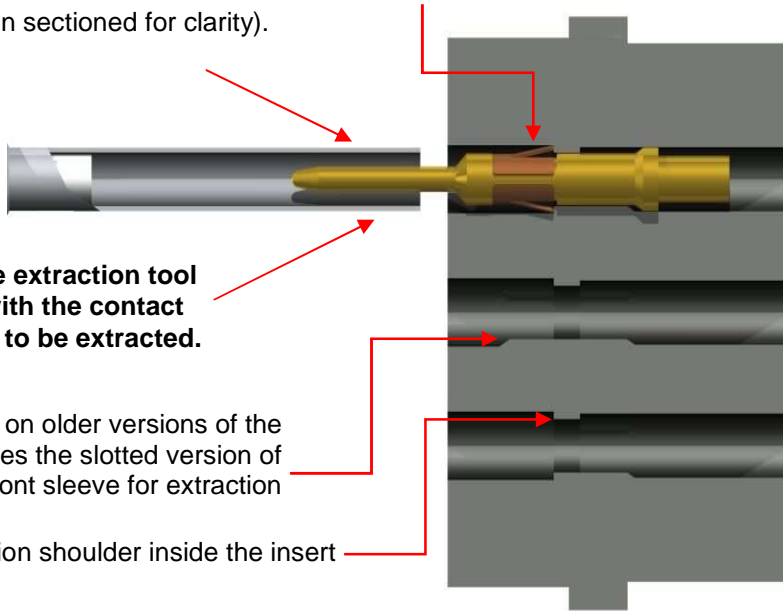
The new solid front extraction tool is only compatible with the latest NF-F-61-030 approved insets; insert without front stabilizing pips. However, to support current insert design in the field AB Connectors will continue to supply the slotted front within the extraction tool part number.

	Prepared By : Mike Townsend – Technical & Quality Director	Issue : 1	11 th Aug 2010	Page 2 of 6
---	--	-----------	---------------------------	-------------

3. Extraction Procedure

Extraction tool front sleeve
(Sleeve has been sectioned for clarity).

'Retention Clip' on contact.

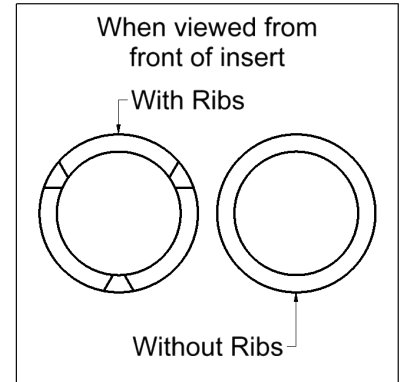


Step 1

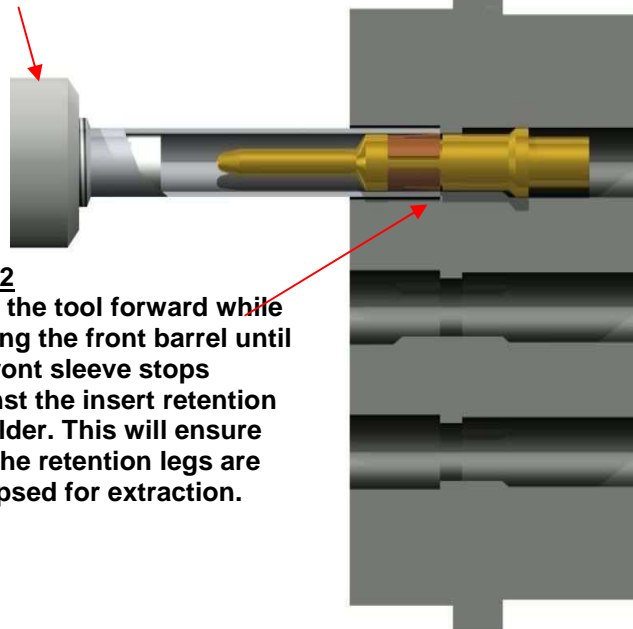
Align the extraction tool sleeve with the contact which is to be extracted.

Alignment ribs on older versions of the insert which requires the slotted version of the front sleeve for extraction

Retention shoulder inside the insert

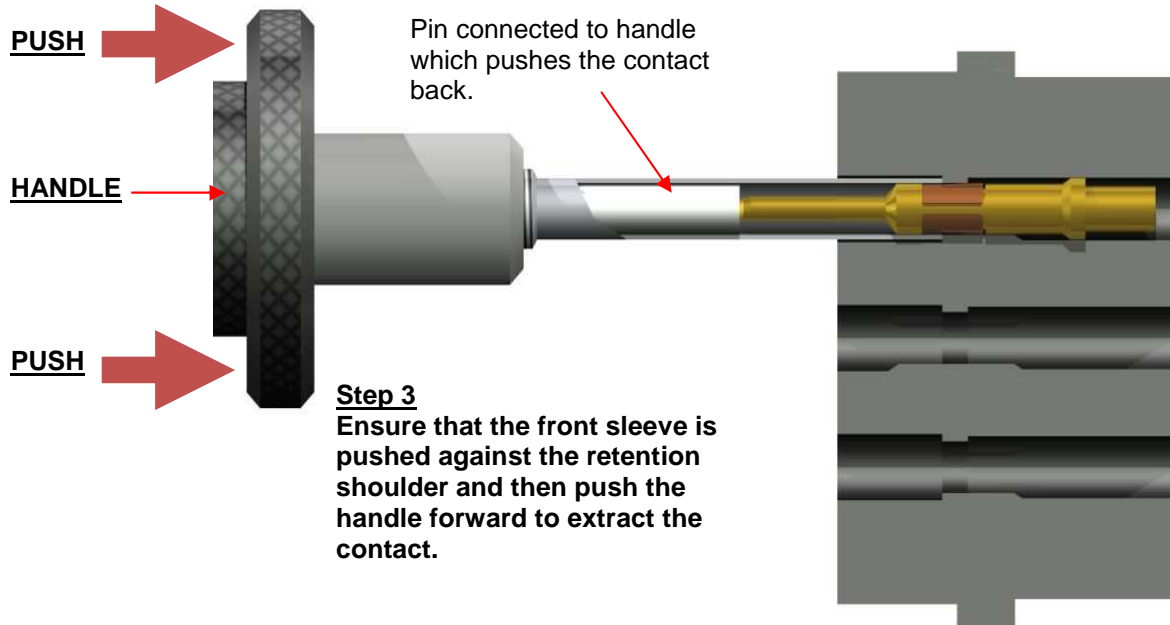


Extraction tool front barrel




Step 2

Push the tool forward while holding the front barrel until the front sleeve stops against the insert retention shoulder. This will ensure that the retention legs are collapsed for extraction.

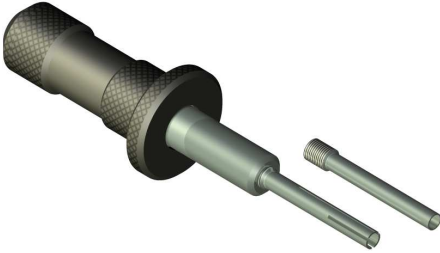



If in any doubt regarding the correct usage of the tool, please contact the helpdesk, the contact details are identified below

Assembly instruction: AB Specification 528 Issue 9 - available on request

	Prepared By : Mike Townsend – Technical & Quality Director	Issue : 1	11 th Aug 2010	Page 4 of 6
---	--	-----------	---------------------------	-------------

4. Part Numbers

	<p>Extraction tool (Contains slotted and solid front sections)</p>	<p>P80 16 ETA P80 12 ETA</p>
	<p>Extraction Tool Replacement Fronts Pack of 2. Slotted and Solid</p>	<p>P80 16 ETSA P80 12 ETSA</p>
	<p>Extraction tool front individual <u>Slotted</u></p>	<p>P80 16 ETS 2 P80 12 ETS 2</p>
	<p>Extraction tool front individual <u>Solid</u></p>	<p>P80 16 ETS 3 P80 12 ETS 3</p>

5. Customer Support Contacts

The following contact names and details are available to answer any questions:-

Department	Name		Office number	Mobile number
Sales - Manager	Geraint Davies	-	01443 743 488	07721920444
Sales – Desk	Robert Taylor	-	01443 743 405	N/A
Technical – Manager	Paul Lineham	-	01443 743 487	07899661753
Technical – Director	Mike Townsend	-	01443 743 409	07748775587
Quality – Manager	Kevin Webber	-	01443 743 484	N/A